



г. Пермь

+7(342)286-14-64

+7(342)243-00-05

Паспорт к товару "Водонагреватель накопительный ARISTON ABS ANDRIS LUX 30"

Ссылка на этот товар в интернет-магазине сантехники и инженерного оборудования Водoley59 vodoley59.ru

<https://vodoley59.ru/products/vodonagrevatel-nakopitelnyi-ariston-abs-andris-lux-30>

Добавлено: 16.12.2024



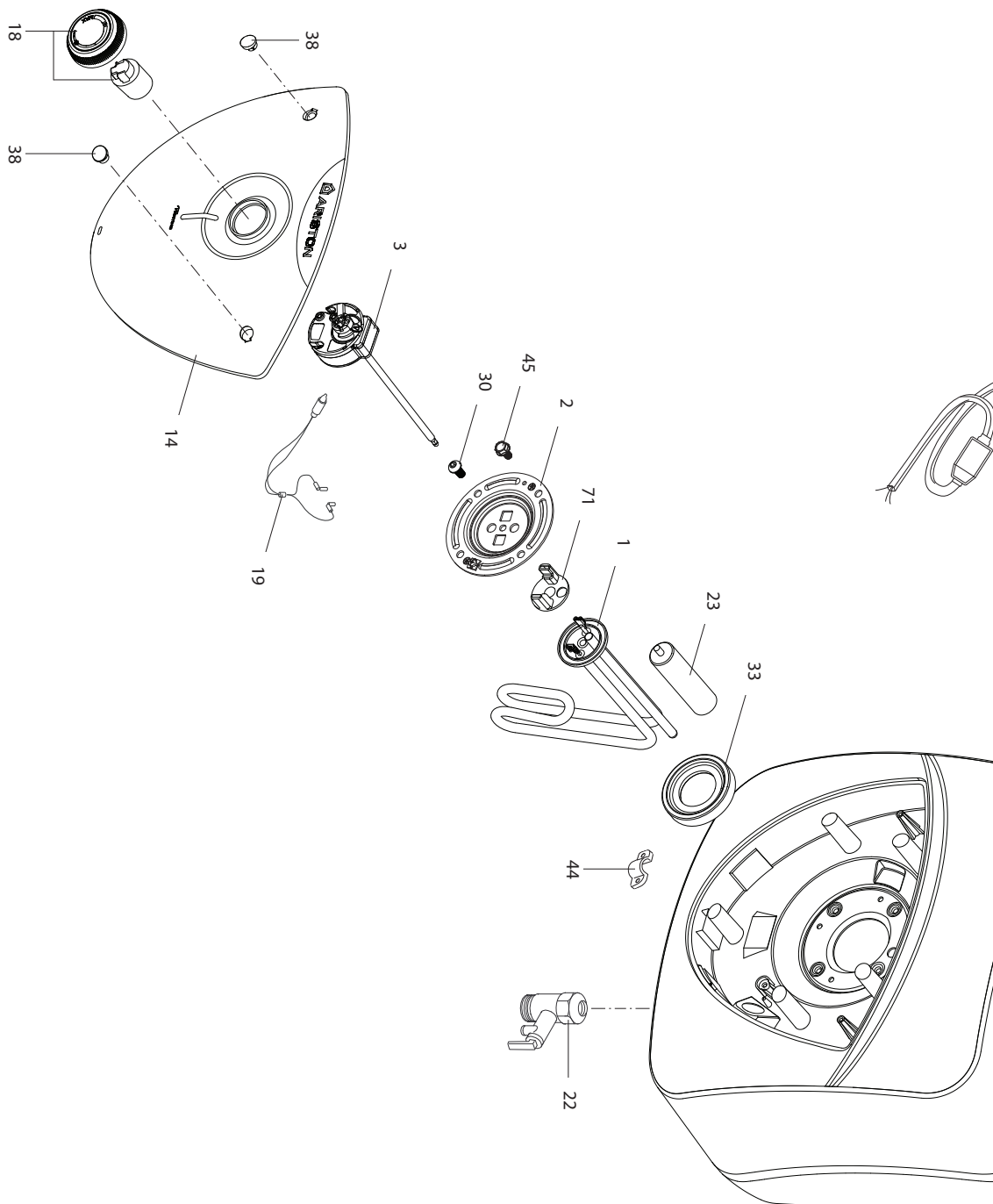
SPARE PARTS EXPLODED VIEW
STORAGE ELECTRIC WATER HEATERS
Model
ABS ANDRIS LUX

R8217264-03 - 13/05/2024

ABS ANDRIS LUX

Storage Electric Water Heaters

1	3100604	ABS ANDRIS LUX 10 OR	08-2015	-
2	3100605	ABS ANDRIS LUX 10 UR	08-2015	-
3	3100606	ABS ANDRIS LUX 15 OR	08-2015	-
4	3100607	ABS ANDRIS LUX 15 UR	08-2015	-
5	3100608	ABS ANDRIS LUX 30	08-2015	-
Col	Reference	Model type	Begin	End



☉	Description	Manf. Pt. N	Type	<div style="display: flex; justify-content: space-between; align-items: center;"> <div style="writing-mode: vertical-rl; transform: rotate(180deg); font-size: 8px;"> A. ANDRIS LUX 10 OR A. ANDRIS LUX 10 UR A. ANDRIS LUX 15 OR A. ANDRIS LUX 15 UR A. ANDRIS LUX 30 </div> <div style="border: 1px solid black; padding: 2px;"> </div> </div>																		From	to
				1	2	3	4	5	6	7	8	9	10	11	12	13	14	15	16	17	18		
0001	HEATING ELEMENT 1200W 220-240V	65114900				•	•																
	HEATING ELEMENT 1200W 220-240V	65114905		•	•																		
	HEATING ELEMENT 1500W 220-240V	65114894								•													
0002	FLANGE (4 HOLES)	65114661		•	•	•	•	•													12/15		
	FLANGE (4 HOLES)	65115359		•	•	•	•	•												01/16			
0003	THERMOSTAT	65114891								•													
	THERMOSTAT	65114908		•																			
	THERMOSTAT	65115012			•																		
	THERMOSTAT	65115013				•																	
	THERMOSTAT	65115014						•															
0007	HEATER WALL HANGING BRACKET	570341		•	•	•	•	•															
0014	PLASTIC COVER (COMPLETE)	65115148								•													
	PLASTIC COVER (COMPLETE)	65115145		•	•	•	•	•															
0018	COMPLETE KNOB (REGULATION)	65115024		•	•	•	•	•															
0019	SIGNAL LAMP	65111550		•	•	•	•	•													05/24		
	SIGNAL LAMP	993025		•	•	•	•	•												06/24			
0022	SAFETY VALVE WITH LEVER (1/2" 8,5 BAR)	571730		•	•	•	•	•															
0023	ANODE D21,3 L:110 M5-M8	65103768-01		•	•	•	•	•															
0030	SCREW M6X12	993000		•	•	•	•	•															
0033	FLANGE GASKET	65116115		•	•	•	•	•															
0038	SCREW COVER	65115133		•	•	•	•	•															
0044	CABLE CLAMP	573266		•	•	•	•	•															
0045	FLANGE SCREW M6X12	65114656		•	•	•	•	•															
0050	POWER CABLE WITH ELCB (16 A 1,5m)	65151908		•	•	•	•	•															
0071	TERMINAL SHIELD (GREEN)	65121494								•													
	TERMINAL SHIELD (YELLOW)	65114901		•	•	•	•																

LIST OF THE ABBREVIATIONS

HW	: Hot water.
CW	: Cold water.
C	: Ceramic resistance (normal heating).
Ca	: Ceramic resistance (accelerated heating)
TP	: Immersion heater.
1F	: With fittings.
2F	: Without fittings.
3F	: With fittings and another outlet connection.
AMI	: With mixing valve.
SMI	: Without mixing valve.
PUISS	: Power of th appliance.
PN	: Appliance with normal pression.
LP	: Appliance with low pression.
PV	: Appliance with variable power.
PF	: Appliance with fixed power.

IDENTIFICATION PLATE

SERIAL NUMBER

6 Characters :
 Year of manufacture 03 09 08 Manufacturing day
 Month of manufacture

9 Characters :
 Year of manufacture 5 9 12 0606 Sequential number
 Month of manufacture

14 Characters :
 SI-V-0B0 45 07 0001
 Sequential number
 Year of manufacture : → 6 → 2004
 Month of manufacture : → 25 → January 43 → July 7 → 2005
 → 13 → February 29 → August 8 → 2006
 → 32 → March 40 → September etc ...
 → 35 → April 38 → October
 → 39 → May 51 → November
 → 45 → June 12 → December

14 Characters :
 111518 XX 000010
 Month of manufacture Sequential number
 Day of manufacture Year of manufacture

15 Characters :
 02 11 00001 007843
 Year of manufacture Product reference
 Month of manufacture Sequential number

21 Characters :
 3200050 XX 08115 0000001
 Product reference Sequential number
 Year (08) / Manufacturing day (115)

22 Characters :
 3200050 XX 070115 0000001
 Product reference Sequential number
 Year (07) / Month (01) / Manufacturing day (15)