



г. Пермь

+7(342)286-14-64

+7(342)243-00-05

Паспорт к товару "Водонагреватель накопительный ARISTON ABS ANDRIS LUX 15 OR"

Ссылка на этот товар в интернет-магазине сантехники и инженерного оборудования Водoley59 vodoley59.ru

<https://vodoley59.ru/products/vodonagrevatel-nakopitelnyi-ariston-abs-andris-lux-15-or>

Добавлено: 16.12.2024



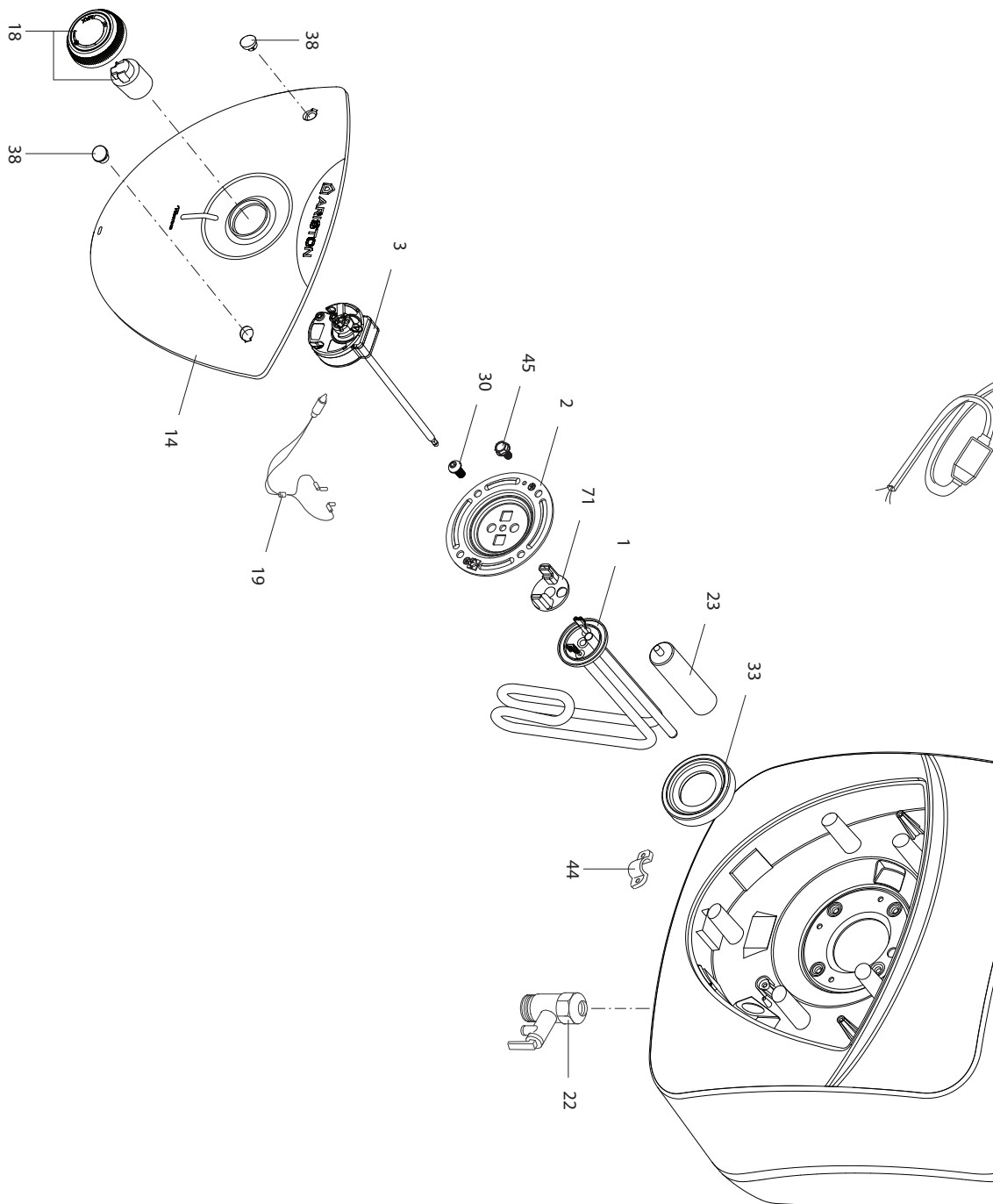
SPARE PARTS EXPLODED VIEW
STORAGE ELECTRIC WATER HEATERS
Model
ABS ANDRIS LUX

R8217264-03 - 13/05/2024

ABS ANDRIS LUX

Storage Electric Water Heaters

| 1 | 3100604 | ABS ANDRIS LUX 10 OR | 08-2015 | - |
|-----|-----------|----------------------|---------|-----|
| 2 | 3100605 | ABS ANDRIS LUX 10 UR | 08-2015 | - |
| 3 | 3100606 | ABS ANDRIS LUX 15 OR | 08-2015 | - |
| 4 | 3100607 | ABS ANDRIS LUX 15 UR | 08-2015 | - |
| 5 | 3100608 | ABS ANDRIS LUX 30 | 08-2015 | - |
| Col | Reference | Model type | Begin | End |



| ☉ | Description | Manf. Pt. N | Type | A. ANDRIS LUX 10 OR A. ANDRIS LUX 10 UR A. ANDRIS LUX 15 OR A. ANDRIS LUX 15 UR A. ANDRIS LUX 30 | | | | | | | | | | | | | | | | | | From | to |
|------|--|-------------|------|--|---|---|---|---|---|---|---|---|----|----|----|----|----|----|----|-------|-------|------|----|
| | | | | 1 | 2 | 3 | 4 | 5 | 6 | 7 | 8 | 9 | 10 | 11 | 12 | 13 | 14 | 15 | 16 | 17 | 18 | | |
| 0001 | HEATING ELEMENT 1200W 220-240V | 65114900 | | | | ● | ● | | | | | | | | | | | | | | | | |
| | HEATING ELEMENT 1200W 220-240V | 65114905 | | ● | ● | | | | | | | | | | | | | | | | | | |
| | HEATING ELEMENT 1500W 220-240V | 65114894 | | | | | | | | ● | | | | | | | | | | | | | |
| 0002 | FLANGE (4 HOLES) | 65114661 | | ● | ● | ● | ● | ● | | | | | | | | | | | | | 12/15 | | |
| | FLANGE (4 HOLES) | 65115359 | | ● | ● | ● | ● | ● | | | | | | | | | | | | 01/16 | | | |
| 0003 | THERMOSTAT | 65114891 | | | | | | | | ● | | | | | | | | | | | | | |
| | THERMOSTAT | 65114908 | | ● | | | | | | | | | | | | | | | | | | | |
| | THERMOSTAT | 65115012 | | | ● | | | | | | | | | | | | | | | | | | |
| | THERMOSTAT | 65115013 | | | | ● | | | | | | | | | | | | | | | | | |
| | THERMOSTAT | 65115014 | | | | | ● | | | | | | | | | | | | | | | | |
| 0007 | HEATER WALL HANGING BRACKET | 570341 | | ● | ● | ● | ● | ● | | | | | | | | | | | | | | | |
| 0014 | PLASTIC COVER (COMPLETE) | 65115148 | | | | | | | | ● | | | | | | | | | | | | | |
| | PLASTIC COVER (COMPLETE) | 65115145 | | ● | ● | ● | ● | ● | | | | | | | | | | | | | | | |
| 0018 | COMPLETE KNOB (REGULATION) | 65115024 | | ● | ● | ● | ● | ● | | | | | | | | | | | | | | | |
| 0019 | SIGNAL LAMP | 65111550 | | ● | ● | ● | ● | ● | | | | | | | | | | | | | 05/24 | | |
| | SIGNAL LAMP | 993025 | | ● | ● | ● | ● | ● | | | | | | | | | | | | 06/24 | | | |
| 0022 | SAFETY VALVE WITH LEVER (1/2" 8,5 BAR) | 571730 | | ● | ● | ● | ● | ● | | | | | | | | | | | | | | | |
| 0023 | ANODE D21,3 L:110 M5-M8 | 65103768-01 | | ● | ● | ● | ● | ● | | | | | | | | | | | | | | | |
| 0030 | SCREW M6X12 | 993000 | | ● | ● | ● | ● | ● | | | | | | | | | | | | | | | |
| 0033 | FLANGE GASKET | 65116115 | | ● | ● | ● | ● | ● | | | | | | | | | | | | | | | |
| 0038 | SCREW COVER | 65115133 | | ● | ● | ● | ● | ● | | | | | | | | | | | | | | | |
| 0044 | CABLE CLAMP | 573266 | | ● | ● | ● | ● | ● | | | | | | | | | | | | | | | |
| 0045 | FLANGE SCREW M6X12 | 65114656 | | ● | ● | ● | ● | ● | | | | | | | | | | | | | | | |
| 0050 | POWER CABLE WITH ELCB (16 A 1,5m) | 65151908 | | ● | ● | ● | ● | ● | | | | | | | | | | | | | | | |
| 0071 | TERMINAL SHIELD (GREEN) | 65121494 | | | | | | | | ● | | | | | | | | | | | | | |
| | TERMINAL SHIELD (YELLOW) | 65114901 | | ● | ● | ● | ● | | | | | | | | | | | | | | | | |

LIST OF THE ABBREVIATIONS

| | |
|-------------|--|
| HW | : Hot water. |
| CW | : Cold water. |
| C | : Ceramic resistance (normal heating). |
| Ca | : Ceramic resistance (accelerated heating) |
| TP | : Immersion heater. |
| 1F | : With fittings. |
| 2F | : Without fittings. |
| 3F | : With fittings and another outlet connection. |
| AMI | : With mixing valve. |
| SMI | : Without mixing valve. |
| PUISS | : Power of th appliance. |
| PN | : Appliance with normal pression. |
| LP | : Appliance with low pression. |
| PV | : Appliance with variable power. |
| PF | : Appliance with fixed power. |

IDENTIFICATION PLATE

SERIAL NUMBER

6 Characters :
 Year of manufacture 03 09 08 Manufacturing day
 Month of manufacture

9 Characters :
 Year of manufacture 5 9 12 0606 Sequential number
 Month of manufacture

14 Characters :
 SI-V-0B0 45 07 0001
 Sequential number
 Year of manufacture : 6 → 2004
 Month of manufacture : → 25 → January 43 → July 7 → 2005
 13 → February 29 → August 8 → 2006
 32 → March 40 → September etc ...
 35 → April 38 → October
 39 → May 51 → November
 45 → June 12 → December
 Product model

14 Characters :
 111518 XX 000010
 Month of manufacture Sequential number
 Day of manufacture Year of manufacture

15 Characters :
 02 11 00001 007843
 Year of manufacture Product reference
 Month of manufacture Sequential number

21 Characters :
 3200050 XX 08115 0000001
 Product reference Sequential number
 Year (08) / Manufacturing day (115)

22 Characters :
 3200050 XX 070115 0000001
 Product reference Sequential number
 Year (07) / Month (01) / Manufacturing day (15)